

BIOROLES®

ENTRANCE AUTOMATION

ACCESS CONTROL SYSTEM

TIME ATTENDANCE SYSTEM

SMART DOOR LOCKS

ACCESS CONTROL ACCESSORIES

WIDEST RANGE OF
Entrance
Automation
Access Control
&
Time Attendance Products



Introduction

BIOROLES® is fastest growing Brand in the field of Entrance Automation, Access Control Systems, Time Attendance System, Smart Locks and allied products.

Our product comprises Boom Barriers, UHF Controller, Metal Detectors, Barrier Gates, Guard Patrol System, Finger & Face Attendance System, Access Control System, Smart Door Locks and widest range of Access Control Accessories in India. We ensure all our products meet the international standards and we adopt strict quality control approach while manufacturing & test functioning & compatibility.

We have gained trust of our clients due to our Range of Quality Products and Excellent After Sale Services. Customer's satisfaction is the driving force of our organization and we strive hard to meet the exact requirements of customers' needs.

We are backed by a State-of-the-art Infrastructure, R&D unit and efficient workforce support.

We look forward to understand your needs and design appropriate solution in most competitive prices.

The focus of our company is to develop local content and promote “Make in India” mission.

Today, BIOROLES has PAN INDIA presence through our more than 350+ active Channel Partners.

350+
Channel Partners

50+
Distributors



Make in India

For the requirements from clients and market orientation, we also offer flexible, customized and diverse services to assist our partners and customers to face the changing and competitive market. Global localization and local globalization, through our R&D and sales network.

OEM And Private Label Services

BIOROLES® state-of-the-art production/Testing facility based in India has revolutionized the provision of OEM and Private Label services to customer, some of leading brands in the world

BIOROLES® offers a one stop solution for all your Security Products and related Software Solutions. Choose from a wide range of products, including Boom Barriers, UHF Controller, Metal Detectors Barrier Gates, Guard Patrol System, Finger & Face Attendance System, Access Control System, Smart Door Locks and related accessories.

Technology Meets Security And Safety!



Turnstile & Barrier Gates

Single Lane Full Height Turnstile

BS-FH1L



- Operating Time : 0.2 Sec
- Normal Work Life : 3 Million Times
- Communication : TCP/IP,RS485
- Voltage : AC 20-240/50Hz-60 Hz 100 watt

Double Lane Full Height Turnstile

BS-FH2L



- Operating Time : 0.2 Sec
- Normal Work Life : 3 Million Times
- Communication : TCP/IP,RS485
- Voltage : AC 200-240/50Hz-60 Hz 100 watt

Flap Barrier

BFB-02



- Unlock Mode: Face, Finger, Card, QR
- Size: 1200x280x980mm
- Passing Speed: 40People/min
- Life Cycle: 9 Million Times

Swing Barrier

BSB-02



- Unlock Mode: Face, Finger, Card, QR
- Size: 1400x190x980mm
- Passing Speed: 40People/min
- Life Cycle: 9 Million Times

Sliding Barrier

BSL-02



- Unlock Mode: Face, Finger, Card, QR
- Size: 1400x310x980mm
- Passing Speed: 40People/min
- Life Cycle: 9 Million Times

Tripod Turnstile

BTP-01



- Unlock Mode: Face, Finger, Card, QR
- Unlock Time: 0.23Sec
- Passing Speed: 35 People/min
- Drive Motor: 24V
- Life Cycle: 9 Million Times

Dual Lane Tripod Turnstile

BTP-01D



- Unlock Mode: Face, Finger, Card, QR
- Size 420x350x900mm
- Passing Speed: 30People/min
- Lane type: Double Lane
- Drive Motor: 24V
- Life Cycle: 9 Million Times

P Type Swing Barrier

BV-PTP01



- Unlock Mode: Face, Finger, Card, QR
- Size: 420x300x980mm
- Passing Speed: 30People/min
- Drive Motor: 24V
- Life Cycle: 9 Million Times

Bridge Type Tripod Turnstile

BTP-02



- Unlock Mode: Face, Finger, Card, QR
- Size: 1200x350x900mm
- Passing Speed: 30People/min
- Drive Motor: 24V
- Life Cycle: 9 Million Times

Door Frame Metal Detector

Door Frame Metal Detector

BS-800A-D



- Zone: 18/33
- Alarm Sound, Light, IN/OUT Counter
- Screen: 5.7 inch LED Control Box
- Maximum Sensitivity: $\geq 6g$ Metal
- Power Consumption: 20 Watt
- Dimension: 2191x875x445mm
- Detection Time: 100 Person/min

Door Frame Metal Detector

BS-24A-B



- Zone: 9/18
- Alarm Sound, Light, IN/OUT Counter
- Maximum Sensitivity: $\geq 10g$ Metal
- Power Consumption: 12 Watt
- Dimension: 2157x812x349mm
- Detection Time: 80-90 Person/min
- Multy Zone Technology

Door Frame Metal Detector

BS-WD18S



- Zone: 6/9/18
- Alarm Sound, Light, IN/OUT Counter
- Maximum Sensitivity: $\geq 6g$ Metal
- Power Consumption : 15 Watt
- Dimension: 2230x830x480mm
- Detection Time: 100 Person/min

Walk Through Metal Detector

BS-WD24



- Zone: 24
- Alarm Sound, Light, IN/OUT Counter
- Maximum Sensitivity: $\geq 6g$ Metal
- Power Consumption: 20 Watt
- Dimension: 2191x875x445mm
- Detection Time: 100 Person/min

Single Panel Walk Through Metal Detector

500-DA



- Dimension 2224x678x125mm (6/11 zones)
- Power consumption - 15W X:
- Y: 9.62 in Net Weight 21kgs (5 zones)/24kgs (6zones)
- Operating Voltage AC90V~240V 50/60

Boom Barriers

High Speed DC Barrier

BM-DZE2-BL/H



- Running Speed: 0.9~25
- Max Boom Length: 3~4M Straight
- Frequency: 50/60Hz
- Motor: 24V BLDC

AC Boom Barrier

BM-AZE1-BL



- Speed: 3-6 sec
- Arm Type: Straight/Telescopic
- Max Arm Length: 6M
- Motor: AC 220V

DC Springless Barrier

BM-DZE-40P



- Speed: 3-6 sec
- Arm Type: Straight/Telescopic
- Max Arm Length: 6M
- Motor: 24V BLDC

High Speed DC Barrier

BM-SCB02



- Running Speed: 0.3~25
- Max Boom Length: 3~4M Straight
- Frequency: 50/60Hz
- Motor: 24V BLDC

High Speed DC Barrier

BM-AK15



- Running Speed: 1.8~6S
- Max Boom Length: 3-6M Straight/Telescopic
- Frequency: 60Hz
- Motor: 24V BLDC

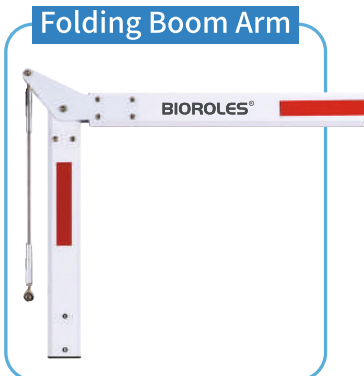
DC Brushless Barrier Gate

BM-DZE1-UL

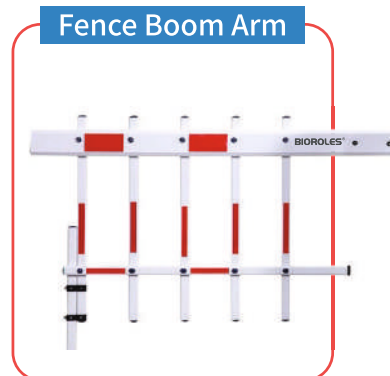


- Running Speed: 1.8~6S
- Max Boom Length: 3-6M Straight Telescopic
- Frequency: 60Hz
- Motor: 24V BLDC

Folding Boom Arm



Fence Boom Arm



Swing Type Boom Mechanism



ANPR, UHF Reader & Hand Held Metal Detector

ANPR Camera

B-NPR4



- Sensor: 200W 1/2.8 CMOS
- Resolution: 1920x1080
- Lens: 6mm Fixed Focus Lens
- Port: CS/M14

UHF Reader 9M

BS-UR09



- Frequency: 860~920Mhz
- Antenna: 9dbi circular antenna
- Communication: Rs232/WG/Relay/USB
- Reading distance: upto 9M

UHF Reader

BS-UR10



- Frequency: 860~920MHz
- Antenna: 9dbi circular antenna
- CommunicationsR 232/WG/Relay/Trigger
- Reading distance: Upto 10M

UHF Reader 15M

BS-UR15



- Frequency Band: 860~920Mhz
- Antenna: 12dbi circular antenna
- Effect Distance: upto 15M
- Support: RS232, RS485, Wiegand

Hand Held Metal Detector

DE-1



- Working Hours: 40 Hours
- Detection Distance: 30~60mm
- Power Supplier: 2AA Batteries
- Sound & Vibration
- Rechargeable Battery & Charger (Optional)

Boom Barrier Accessories Controller

Loop Detector

LD1/LD2



Solar Beam Reflector

BS-W09



Beam Sensor

PC-101



Entrance Automation System

AC Sliding Gate Operator

BS22DSG



- Working Voltage: AC 220+-10%
- Manual Release: Yes
- Gear Speed: 58.5rpm
- Travel Speed: 11m/min
- Max Gate Weight: 1800KGS

DC Sliding Gate Opener

BS-24A-B



- Working Voltage: AC220V+-10%
- Protection: IP44
- Travel Speed: 15m/min
- Max Gate Weight: 1000KGS
- Motor: DC 24V

Swing Gate Opener

BS-C01



- Working Voltage: 24V DC, 40 Watt
- Operating Distance: 2.5M
- Protection Class: Ip55
- Speed: 200RPM
- Gate Open Angle: 100degree
- Gate single Leaf Weight: 200Kg

Silding Gate Opener

BS2201SG



- Power supply: 220v+10%/50Hz
- Motor: 220V AC
- Absorbed motor power: 130W
- Gate moving speed: 12m/mln
- Max gate weight:300kgs

Silding Gate Opener

BS2206SG



- Rated Voltage: 220V+10%/110V+10%
- Electric Motor: 220VAC/110VAC
- Rated Motor Power: 250W
- Gear Modulus: M-4
- Max Loading Weight: 600KG
- Open/Close Speed: 12m/min

Automatic Hydraulic Bollards

BL-759



- Diameter selection 168mm,219mm,273mm 324mm optional Thickness 633
- Through the pressure bearing over 80 tons container truck
- Bollard weight+180kg
- Power supply 380V (Control voltage 24V)
- System Power 3.7KW

Time Attendance Devices

AI Face Attendance

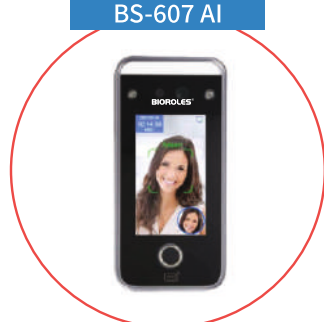
BSF-91A



- Face, Card Capacity: 20000
- Live Face Detection
- TCP/IP, Wifi, USB
- 8" Touch Screen
- Access Control

AI Face & Finger Attendance

BS-607 AI



- Face, Card Capacity: 5000
- Finger Capacity: 10000
- TCP/IP, Wifi, USB
- 4.3" Color Screen
- Access Control

AI Face Attendance

BS-606 AI



- Face, Card Capacity: 5000
- Live Face Detection
- TCP/IP, Wifi, USB
- 4.3" Color Screen
- Access Control

Face & Finger Attendance

BSFP-51



- Face, Card, Pin Capacity : 5000
- 2.8" Inch Color Screen
- Live Face Detection
- WiFi, TCP/IP, USB Disk
- Access Control

AI Face Attendance

BSFP-52



- Face, Card Capacity: 5000
- Live Face Detection
- Wifi, USB, TCP/IP
- 4.3" Color Screen
- Access Control, Battery Backup

Fingerprint

BS-28



- Finger, Card, Pin Capacity: 3000
- 2.8" Inch Color Screen
- TCP/IP, USB, WiFi (Optional)
- Professional Access Control

Multi Door & Elevator Controller

One Door

AD1



Two Door

AD2



Four Door

AD4



- Access Controller for Door/Barrier/Turnstiles
- 1 Door 2 Reader
- 42000 Cards, 200000 Record Capacity
- Wiegand-Card/QR/Finger/Face Reader Support

- Access Controller for Door/Barrier
- 2 Door 4 Reader
- 42000 Cards, 200000 Record Capacity
- Wiegand-Card/QR/Finger/Face

- Access Controller for Door/Barrier
- 4 Door 8 Reader
- 42000 Cards, 200000 Record Capacity
- Wiegand-Card/QR/Finger/Face

Elevator Controller

EVC5816A



Web Base Eight Door Controller

Biomac S2



Web Base Four Door Controller

Biomac D4



- Rs485 connection over controller reader.
- 16-Storey floor control per Panel
- 20,000~50,000 cardholders
- Extend upto 32 Floors

- Access Controller for Door/Barrier
- 8 Door 16 Reader
- 20000 Cards, 50000 Record Capacity
- Wiegand-Card/QR/Finger/Face
- TCP/IP

- Access Controller for Door/Barrier
- 4 Door 4 Reader
- 20000 Cards, 50000 Record Capacity
- Wiegand-Card/QR/Finger/Face
- TCP/IP

Standalone Access Control Devices

F501



BT-12



KM-35



- 2.8 Inch LCD display
- Touch keypads
- Support EMID card (125 KHz)
- Standard user capacity 10,000
- Exit Reader Supported

- Touch sensitive keypads
- Support MIFARE 13.56MHz
- Standard user capacity 2000 users
- User Backup option Available
- Exit Reader Supported

- Push Keypads
- Support EMID card (125 KHz)
- Standard user capacity 2000 users
- User Backup option Available
- Exit Reader Supported

B-32E



- Digital Backlit Keypads
- Support EMID card (125 KHz)
- Standard user capacity 2000 users
- Reading Range 2-5CM
- Exit Reader Supported

BK12V



- Push Keypads
- Support EMID card (125 KHz)
- Standard user capacity 2000 users
- User Backup option Available
- Exit Reader Supported

BT12AP



- Touch sensitive keypads
- Support EM / MIFARE card
- Standard user capacity 2000 users
- User Backup option Available
- Exit Reader Supported

T20



- Touch sensitive keypads
- Support EM/MIFARE card
- Standard user capacity 2000 users
- Multi door external reader
- Exit Reader Supported

BT8E



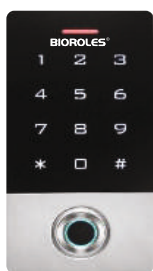
- Touch sensitive keypads
- Support EMID card/ MIFARE card
- Standard user capacity 2000
- Exit Reader Supported

BT3E



- Touch sensitive keypads
- Support EMID card/MIFARE card
- Standard user capacity 2000
- WaterProof
- Exit Reader Supported

A 50 / A50 AP



- Metal Touch sensitive keypads
- Support EMID card (125 KHz)
- Standard user capacity 2000 users
- Optical FP Sensor, Waterproof
- WiFi (Smart LifeApp Optional)

A51



- Capacitor Touch keypads
- Support EMID card (125KHz)
- Card User 10000, Finger Use 200
- Optical FP sensor, Waterproof
- WiFi (Smart LifeApp Optional)

VF1E



- Touch keypads
- Support EMID card (125KHz)
- Card User 1000, Finger Use 200
- Intercom, Photograph, Video
- WiFi (Tuya App Optional)

KM-36



- Verify Mode: ID card, Password
- Working Voltage: DC12V input
- Card Capacity: 2999
- Keyboard Type: Touch Keyboard

B-31E



- Backlit Keypads
- Support EMID card (125 KHz)
- Standard user capacity 2000
- Plastic Shell

K-1401



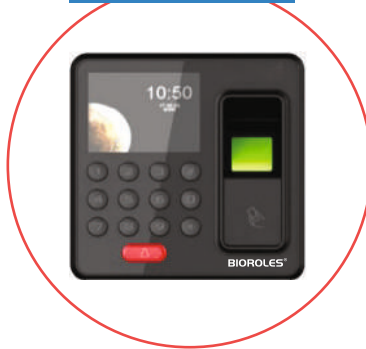
- Waterproof Ip68
- Push keypads
- Support EMID card (125 KHz)
- Plastic Shell
- Standard user capacity 2000
- Exit Reader Supported

KM-36F



- Verify Mode: Finger, card, Password
- Working Voltage: DC12V input
- Finger Capacity: 100
- Card Capacity: 7900
- Keyboard Type: Touch Keyboard

A80



- 2.8 Inch LCD display
- Push keypads
- Support EMID card (125 KHz)
- Standard user capacity 1000
- USB Data Output
- Exit Reader Supported

A60



- Push Keypads
- Support EMID card (125 KHz)
- Standard user capacity 500 users
- Optical FP sensor

Smart Door Locks

Face & Finger Door Lock

B-500AP



- Material: zinc alloy
- Lock Body: Four tongues cose 1.72 in
- Applicable door thickne Y: 10.22 in 20mm
- Communication: WiFi
- Finger/Card/Pin Capacity: 100
- System: 1057.0 or android 4.4 or above

Door Lock

BR-60



- Fingerprint Capacity: 100
- Unlock Mode: Card, Fingerprint, PIN
- App Supported
- Communication: WiFi
- Mechanical Key
- Dual Side Fingerprint Sensor

Door Lock

BR-90



- Fingerprint Capacity: 100
- Unlock Mode: Card, Fingerprint, PIN
- Battery Life: 4-6 Months
- Communication: Bluetooth, App
- Dual Side Fingerprint Sensor

Glass Door Lock

BS-92



New Launch

- Fingerprint Capacity: 100
- App Supported, 1.8" LCD Screen
- Communication: WiFi
- Recognition Speed: 0.5s
- Unlock Mode: Card, Fingerprint, PIN, APP

Glass Door Lock

CP-94



New Launch

- Emergency mode unlock by manual key
- Applock Smart Life, Screen Rotation
- Excel Report, Tempromy Password, Passage mode
- Bluetooth & WiFi both Available Unlock by App
- User add Through Moblie Application
- Fingerprint, Card, Password & Face

Glass Door Lock

CP-93



New Launch

- Emergency mode unlock by manual key
- Applock Smart Life, Screen Rotation
- Excel Report, Tempromy Password
- Bluetooth & WiFi both Available Unlock by App
- User add Through Moblie Application
- Fingerprint, Card, Password

Smart Door Lock

BS-95WFL



New Launch

- Metal design & Waterproof Fingerprint Keypad can install outside
- 433MHz RY: Code technology
- Open/Close by Fingerprint Keypad, CardTag, Transmitter or press the lock
- 1000 users (including 100 fingerprint users + 900 PIN / Card users)
- 4-6 digits PIN, 125KHz EM card

Smart Door Lock

BS-96WIDL



New Launch

- 433MHz Rolling Code technology
- Communication distance: 50m Max
- Open/Close by Keypad, transmitter, or touch the lock
- Open times: 12000 times 100 PIN/card users
- 4~6 digits PIN, 125KHz EM or 13.56MHz Mifare card optional

Smart Door Lock

BS-97WFL



New Launch

- All wireless, no need wires any more
- Open times: 16,000 times for lock, 10,000 times for keypad
- Open the lock by fingerprint keypad, wireless exit button and remote
- 1000 Users (including 100 fingerprint users + 900 PIN/card users) 4-6 digits PIN, 125KHz EM card

Smart Door Lock

BS-98WIDL



New Launch

- Unlock Ways: Face, Fingerprint, Password, IC Card, Key, App
- Power Supply: 4200mAh Lithium Battery, USB Emergency Supply
- Capacity: Face 50, Fingerprint 100, Password 100, Card 100
- Functions: Remote Control, Built-in HD Screen, Low Power Reminder

Access Control

BS-FM5



New Launch

- Full-view OLED display
- Metal case, anti-vandal
- Waterproof, conforms to IP66
- Fingerprint version: 100, 500, 880 fingerprint user capacity optional
- Pin length: 4-6 digits

Access Control

BS-WIDL5



New Launch

- Full-view OLED display Waterproof, conforms to IP66 One relay, 10,000 card/PIN users
- Pin length: 4-6 digits Card types: 125KHz EM card or
- 13.56MHz Mifare Card with Wiegand input & output

Guard Patrol System

Guard Monitoring Device

WM5000X1



- 3.7V/1150mAh rechargeable lithium Batteries IP67
- Vibration with Colorful LED light (Red/Green/ Blue) Authentication by Fingerprint, Card
- LCD display, date and time

Guard Monitoring Device

WM5000V4S



- 3.7V/1150mAh rechargeable lithium Batteries IP67
- Vibration with Colorful LED light (Red/Green/ Blue) Authentication by Card
- LCD display, date and time

Smart Door Locks

Door Lock

TP-618AP



- Fingerprint Capacity: 100
- Unlock Mode: APP, Fingerprint
- Password, Card, C-level Key
- Communication: WiFi, Bluetooth
- Lock Body: Two Tongues

Hotel Lock

H-18



- Material: Zinc Alloy
- Card Type: Mf1
- Temperature: -20 C-+70 C
- Humidity: < 95% RH

Hotel Lock

H-36



- Material: Stainless Steel / Zinc Alloy
- Card Type: Mf1
- Temperature: -20 C - +70 C
- Humidity: < 95% RH

Rim Lock

BVPEL-1



- Hook latch(brass finished)/ Roller
- Reversible function with push button
- 6pcs computer brass keys (plastic cap)
- Size:125X98X36mm

Motorised Rim Lock

BVPEL-2



- Motorised Intelligent lock with single cylinder
- With 5pcs computer brass keys
- Voltage:12-18VDC
- Current:100mA

Smart Rim Lock

BVPEL-3



- With outdoor and indoor card reader
- With remote control & Card
- voltage:12-18VDC, Current: 100mA
- Size:130x98x41mm

Drawer Lock

BDL-1



- Suitable for Wooden <1.96inch (5cm) thick
- to reset, add or delete key cards freely
- Modes: Single/Dual-Key Unlock Mode
- Powered by 4x AAA 1.5V batteries

Drawer Lock

BDL-2



- Material: ABS + Electronic Components
- Colour: Silver
- Indicator Light: Yellow/Red/Green
- Low Power Indicator: Voltage<4.8V

Drawer Lock

BDL-3



- Fingerprint: 20
- Power: 1.5V AAA Battery x3
- Battery Life: >3000 times use
- Pressing times: 10

Access Control Accessories

3x3 ss Exit Switch

BP6-3W



1x3 ss Exit Switch

BP6A



3x3 ss Exit Switch

BP6



Zinc Exit Switch

BPZ30



LED Exit Switch

BP86L



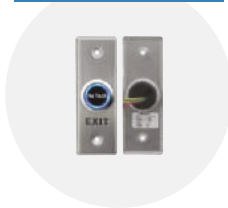
Plastic Exit Switch

BPB5-3W



Slim No Touch Button

BNT-4



No Touch Sensor Button

BNT-3



Emergency Door Release

BEDR1D



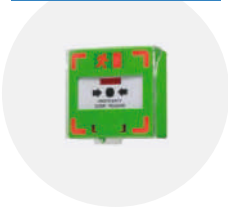
Mushroom Exit Switch

BPDE1

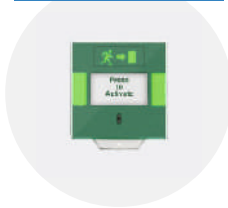


EDR with Flash LED Light Emergency Door Release

EB20G



BEDR1



BEDR2



Penic Exit Bar

EXIT BAR



Strike Locks

BS-132NO



Frame less Drop Bolt Lock

BB-101FL



Wooden Bolt Lock

BB-102/105



Electric Drop Bolt

BS-078KFS



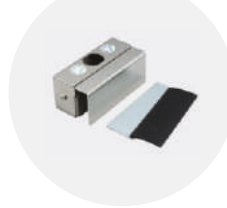
Surface Bolt Lock

BSBS



Bolt Lock ss Bracket

BBLU



Lock Opener Remote Kit

BRM1



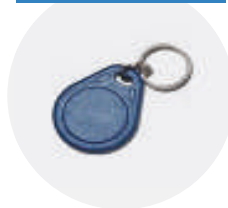
Hooter Fire Alarm

Strobe



Proximity Tags

PTAG1



Door Bell Access

DB1



Hooter Access

BHT



Access Control Accessories

EM Lock 100 LBS

EML-102



EM Lock 300LBS

EML-302



600LBS Feedback

EML-6005



600LBS With Feedback

EML-6002



600LBS Waterproof

EM LOCK



600LBS Without Feedback

EML-600D2



600LBS With Feedback

EML-600D5



Concealed EM Lock

EM LOCK



1200LBS With Feedback

EML-1200D5



Strike Lock

BS-130NO



Mifare Card Reader

V-8



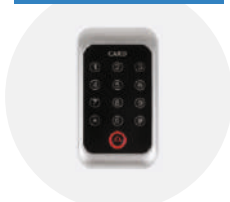
Proximity Card Reader

V-6



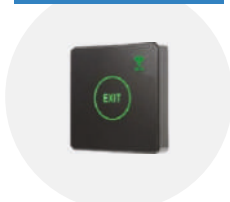
Metal Card Reader

V-10M



Android Exit Switch

BPA1



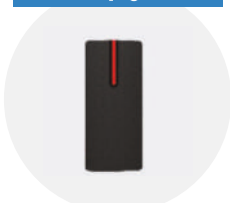
Proximity Card Reader

BRU-06



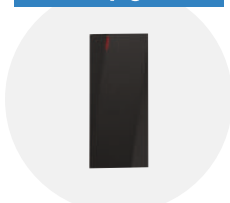
Proximity Card Reader

V-9



Proximity Card Reader

V-3



QR Code Card Reader

QR-1



600LBS L Bracket

L Bracket



600LBS ZL Bracket

ZL Bracket



600LBS U Bracket

U Bracket



600LBS GG Bracket

BEMGG



Glass Door SS Bracket

BBL U1



600LBS LC Bracket

LC-600



Shutter Magnetic Contact

MCS1



Mifare Card

ISOP



Proximity Card

PROX1



UHF Card

UZ43



Magnetic Contact

MC1C/MC1NO



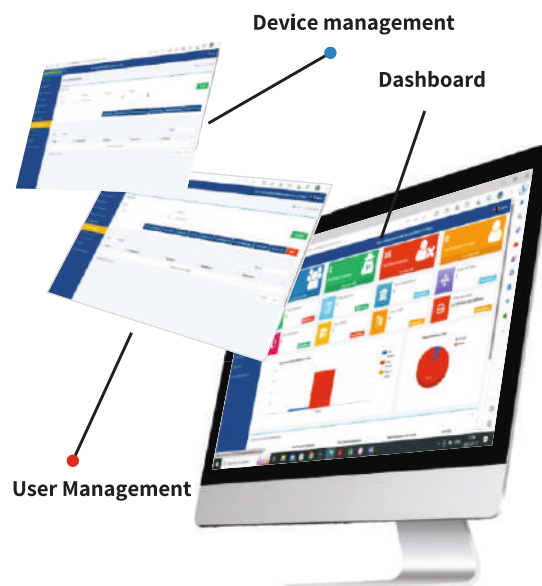
Armature I Bracket

I-600



Cloud TA Web Attendance Software

- Field Employee Tracking with GPS Location Function
- Realtime Attendance Logs
- Remote Registration of FACE / FINGER / CARD
- Remote Device Manager Add/Edit/Remove User
- Remotely Enable / Disable User
- Transfer FACE / FINGER / CARD from Single Device to Multiple Device
- Transfer FACE / FINGER / CARD from Database to Multiple Device
- Optional payroll management for SME
- Time Zone and Group Management
- Auto/ Break /Rotational Shift
- Bulk Employee Upload via Excel
- USB Data upload option for offline devices
- Device Online / Offline Status
- Easy Multiple reports (Daily/Weekly/Monthly)



Responsive Dashboard & User Interface

Cloud TA Employee App

- Mark Attendance from field
- View Attendance Details
- Apply Leave Application
- Selfie Punch

Download CloudTA App



Cloud TA Admin App

- Live Attendance Logs
- Leave / Holiday Management
- view summary of daily attendance
- View Absent, leave
- View Multiple Reports
- View Selfie attendance Punch

Download CloudTA App





BIOROLES®

Bioroles Automation Systems Pvt. Ltd.

F-90/9, Okhla Industrial Area, Phase 1, New Delhi-110020
e-mail : info@bioroles.com



www.bioroles.com

